

ATFM Daily Plan - Monday 03 June 2024

ADP Version 3



Airport	Planned GDPs	Total Arr/Dep	Affected Flights	Total Ground Delay	Av. Ground Delay	36 Hr Synoptic Forecast
YSSY	NONE	874	n/a	0	0.00	
YMML	NONE	673	n/a	0	0.00	
YBBN	NONE	610	n/a	0	0.00	
YPPH-A	YPPH GDP-A 0030-0500	483	68	1,025	15.10	
YPPH-D	YPPH GDP-D 2130-0030		101	1,094	10.80	
Totals		2640	169	2,119	2.76	

* denotes a revision has taken place

ATFM Daily Plan Summary Notes

YSSY	<p>Nil significant operational risk/s identified.</p> <p>Midday Update: BRIEF DETAIL YSSY: CAVOK. NW to WSW winds. ATC ADVICE: 509 (261A/248D) movements remaining. Nil significant network issues identified at this time.</p>
YMML	<p>Nil significant operational risk/s identified.</p> <p>Midday Update: BRIEF DETAIL YMML: Cloud above 2500ft. Possible light showers in TMA. W to SW winds. ATC ADVICE: 403 (209A/194D) movements remaining. Nil significant network issues identified at this time.</p>
YBBN	<p>Nil significant operational risk/s identified.</p> <p>Midday Update: BRIEF DETAIL YBBN: CAVOK. W to SSW winds. ATC ADVICE: 317 (201A/116D) movements remaining. Nil significant network issues identified at this time.</p>
YPPH	<p>Nil significant operational risk/s identified.</p> <p>Midday Update: BRIEF DETAIL YPPH: Isolated passing showers. Cloud 2500-4500ft. WNW to SW winds. Turbulence easing. ATC ADVICE: 317 (201A/116D) movements remaining. GDP-A thru till 0500. Nil significant network issues identified at this time.</p>
Other Significant	Refer NOTAM for latest estimated airborne traffic delay advice.
Change Summary:	<p>[06:48pm] Version 1: Initial. [07:03am] Version 2: Morning Update [12:24pm] Version 3: Midday Update</p>

<p>Teleconference Details 1800 062 923 Participant Code 7207 9651 Guest Code 3064# NCC: 1800 020 626 atfmu@airservicesaustralia.com</p>	CAP THREAT: 022215-030015	PRM: NOT REQ
	YMEN SLOT SCHEME: NO	

Issues expected to impact service delivery

Location	Issue/NOTAM Details
YSSY	C1772/24 RWY 07/25 CLOSED FM 06 022100 TO 06 060700. DAILY 2100-0700 TAXIING PERMITTED
YSSY	C1835/24 RWY 07/25 CLOSED FM 06 031000 TO 06 061300. DAILY 1000-1300 TAXIING PERMITTED
YMML	C0679/24 ILS 'IMS' 109.7 RWY16 ON TEST. FM 06 030000 TO 06 030600
YMML	C663/24 RWY 09/27 CLSD DUE WIP FM 06 050000 TO 06 050600

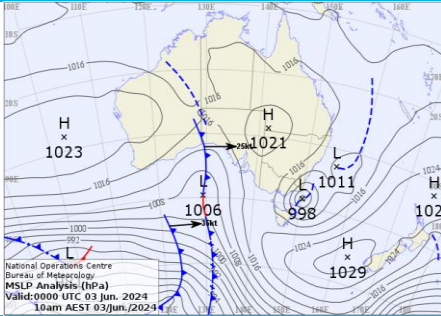
Network Weather Overview

From now to +72 hours

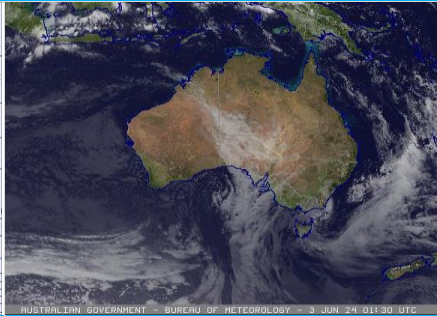
Monday 03 June 2024

Weather Overview

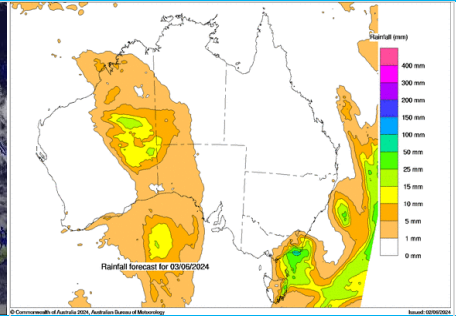
Mean Sea Level Pressure



Satellite Picture



Rainfall Outlook for today



Weather impact risk assessment Major Airports

	Brisbane	Melbourne	Perth	Sydney
PM Monday	CAVOK. Light to moderate W to SW winds.	Cloud 2500-4000ft. Possible light showers in TMA. Light SW winds turning W late evening.	Cloud 2500-5000ft. Possible light showers in TMA. Light W to SW winds turning N to NE or variable late evening.	CAVOK. Light to moderate W to NW winds turning WSW late afternoon/evening. WSW winds increasing to 20-30 knots aloft during the evening.
AM Tuesday	CAVOK. Light SW winds.	Patchy cloud 2500-3000ft. Small chance of showers in the TMA, mostly SE. Light W to NW winds.	Cloud 1500-2000ft, slight risk of being lower. Light N to NE winds.	CAVOK. Moderate W winds on average.
PM Tuesday	CAVOK. Light winds tending NE during the afternoon and NW evening.	Patchy cloud 3000ft. Small chance of showers in the TMA, mostly SE. Light S to SW winds, turning NW during late evening.	Cloud 2000-3000ft. Light showers offshore and south. Light NW winds turning E to NE late evening.	CAVOK until evening patchy cloud around 3000ft. Light SW to SE winds turning NW during the evening.
AM Wednesday	CAVOK at the airport with early fog in far SW TMA. Light SW winds becoming E to NE by midday.	Light showers/drizzle. Cloud 2000-3000ft lower in showers/drizzle. Light W then SW winds.	Cloud 3000-4000ft. Light to moderate N to NE winds.	Light showers offshore and near the coastal areas moving inland. Cloud 2000-2500ft. Light W to WNW winds turning through SW and becoming moderate S'ly.
PM Wednesday	Chance of light inland showers. Cloud above 2500ft. Light Ne to NW winds becoming SW late evening.	Light showers. Cloud 2000-3000ft lowering to 1500-2000ft late evening. Light to moderate SSW to SSE winds, turning light WSW late evening.	CAVOK. Light to moderate N to NE winds.	Showers. Cloud 2000-3000ft, lowering to 1500ft during the evening. Moderate to fresh S'ly winds, possibly gusty at times. S'ly winds increasing 20-30 knots aloft late evening.
AM Thursday	Light showers and 2500-5000ft cloud offshore. Light to moderate S to SSW winds tending SE late morning.	Fog and low cloud in TMA, chance over the airport. Light winds mostly S'ly.	CAVOK with cloud cover increasing. Moderate N to NE winds increasing. 25-40 knots N'ly winds aloft. Strong headwind and risk of early morning wind shear.	Showers. Cloud 1500-3000ft lower in showers. Light to moderate WSW to SW winds tending S'ly.
Significant other phenomena potentially affecting Australian FIRs				

Volcanic Ash (VA) ≥ FL200	Ibu (Indonesia): Volcanic ash is not visible on satellite images with no current reports of on-going eruption. Aviation colour code remains RED. For the latest advisories refer to http://www.bom.gov.au/aviation/volcanic-ash/darwin-va-advisory.shtml
Space Weather	For the latest advisories refer to http://www.bom.gov.au/aviation/space-weather-advisories/
Tropical Cyclones	Nil current. For the latest information refer to http://www.bom.gov.au/cyclone/
<p>Weather risk assessment provided by NCC Meteorological Unit – Bureau of Meteorology Contact NCCMET for further detail or advice</p> <p>Phone: 02 6268 4448 Email: nccmet@bom.gov.au</p> <p>Detailed advice from major Airport MET CDM products available at Airservices NOC Portal, https://www.airservicesaustralia.com/noc/</p>	

MELBOURNE - Nil GDP

Monday 03 June 2024

ATFM-CDM Notes

METCDM Notes:
[1] 2000-2259: A weak high pressure system over eastern Australia and a low pressure system over the Tasman Sea moving slowly southwest with a SW airstream over the area. Light WSW surface winds underneath a very shallow inversion with SSW winds around 15 knots aloft. There is a small chance of winds favouring RWY 27 only if they vary more significantly around west but conditions should be dry in this period. Cloud 3000-4000ft.
[2] 2300-0659: Surface winds turning more SW late morning and expected to remain favouring RWY 16/27. There is a small chance of cloud lowering below 2500ft (VMCB) with some light showers late morning/early afternoon but overall VMCA still appears to be the most likely outcome at this stage.
[3] 0700-1359: Cloud 2500-3000ft. The flow generally turns more westerly during the evening, which may become more favourable for RWY 27/34 from 11Z.

NCC DLM Notes:
[Nil DLM Notes]

SM Notes:
[Nil SMTM Notes]

GDP Notes

Nil significant operational risk/s identified.

Midday Update: BRIEF DETAIL YMML: Cloud above 2500ft. Possible light showers in TMA. W to SW winds.
ATC ADVICE: 403 (209A/194D) movements remaining. Nil significant network issues identified at this time.

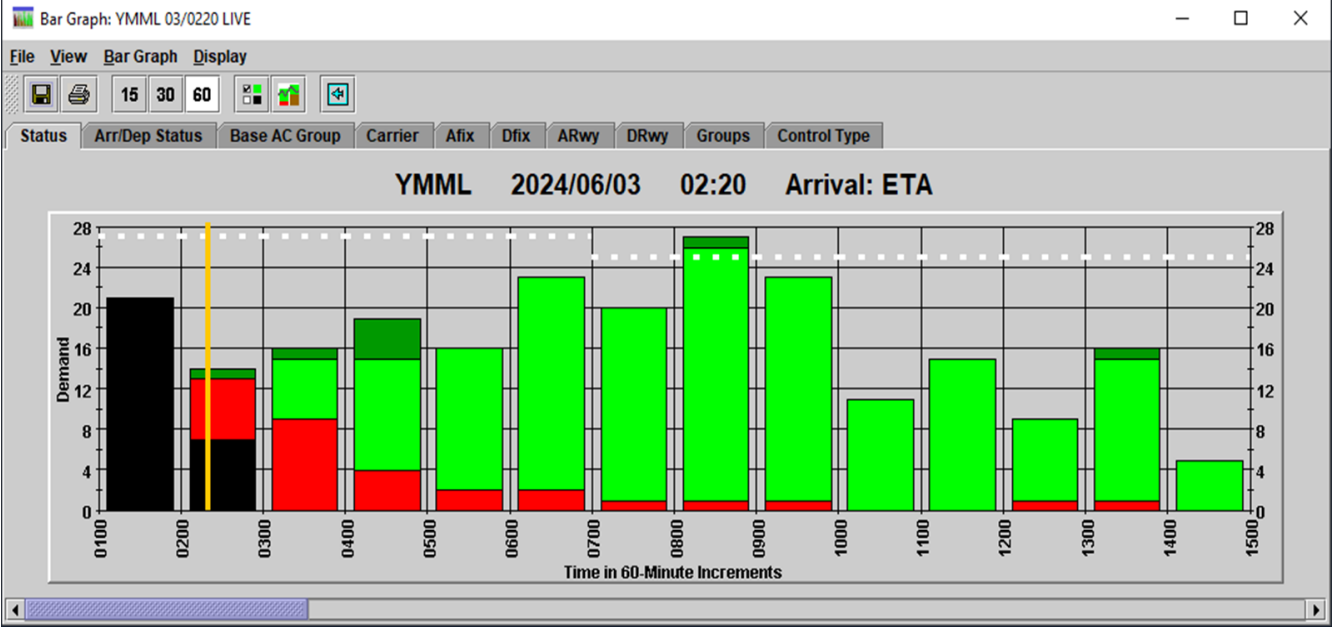
Tabulated Data

Time (Hour UTC)	022000	022100	022200	022300	030000	030100	030200	030300	030400	030500	030600	030700	030800	030900	031000	031100	031200	031300
Runway Mode	16/27 VMCB	16/27 VMCA	16/27 VMCA	16/27 VMCA	16/27 VMCA	16/27 VMCA	16/27 VMCA	16/27 VMCA	16/27 VMCA	16/27 VMCA	16/27 VMCA	16/27 VMCB	16/27 VMCB	16/27 VMCB	16/27 VMCB	16/27 VMCB	16/27 VMCB	16/27 VMCB
Rate	25	27	27	27	27	27	27	27	27	27	27	25	25	25	25	25	25	25

Segmentation and Notes

METCDM Notes	1	1	1	2	2	2	2	2	2	2	2	3	3	3	3	3	3	3
Segmentation	1	1	1	1	1	1	1	1	2	2	2	2	2	2	2	2	2	2

Bar Graph



BRISBANE - Nil GDP

Monday 03 June 2024

ATFM-CDM Notes

METCDM Notes:
[1] 2000-1259: A weak high pressure system over eastern Australia with a ridge and dry W to SW airstream over the area. Winds likely to favour RWY 19 with the gradient flow expected to be a little too strong for this time of the year to support an onshore breeze during the day. CAVOK.

NCC DLM Notes:
[Nil DLM Notes]

SM Notes:
[1] 2000-1259: Reduction due to staffing (XFactor Reason: Staffing)

GDP Notes

Nil significant operational risk/s identified.

Midday Update: BRIEF DETAIL YBBN: CAVOK. W to SSW winds.
ATC ADVICE: 317 (201A/116D) movements remaining. Nil significant network issues identified at this time.

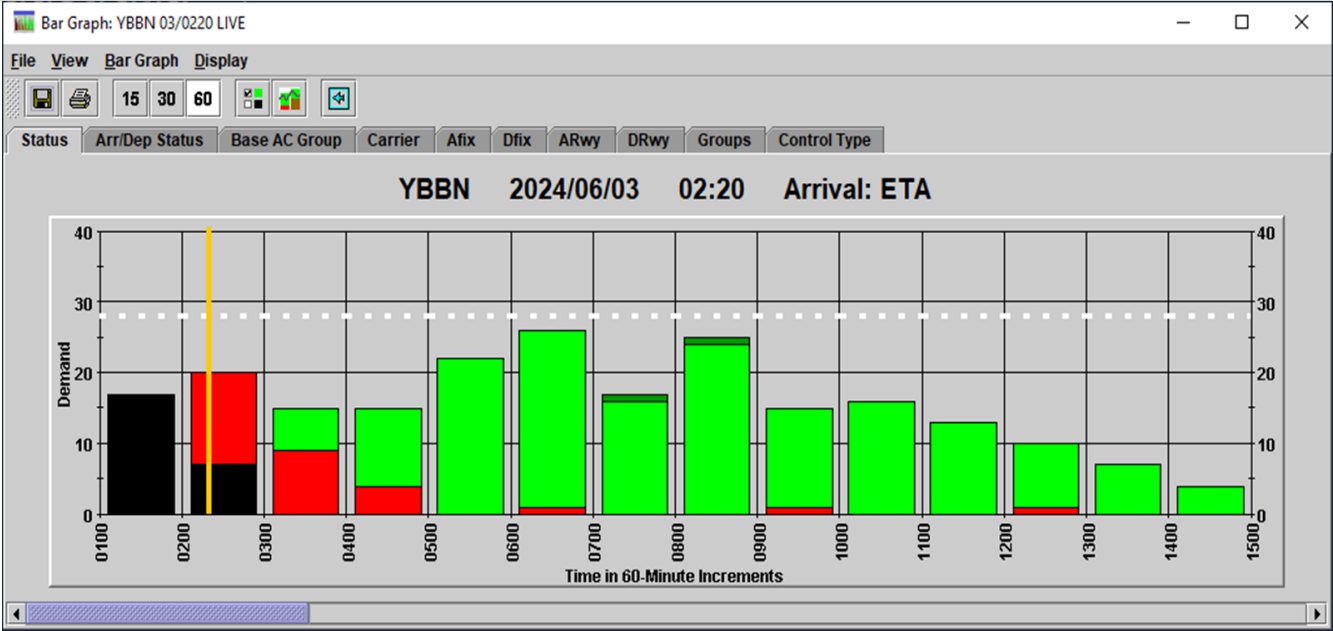
Tabulated Data

Time (Hour UTC)	022000	022100	022200	022300	030000	030100	030200	030300	030400	030500	030600	030700	030800	030900	031000	031100	031200	
Runway Mode	19 VMC	19 VMC	19 VMC	19 VMC	19 VMC	19 VMC	19 VMC	19 VMC	19 VMC	19 VMC	19 VMC	19 VMC	19 VMC	19 VMC	19 VMC	19 VMC	19 VMC	
Rate	28	28	28	28	28	28	28	28	28	28	28	28	28	28	28	28	28	

Segmentation and Notes

METCDM Notes	1	1	1	1	1	1	1	1	1	1	1	1	1	1	1	1	1	0
Segmentation	1	1	1	1	1	1	1	1	2	2	2	2	2	2	2	2	2	

Bar Graph



ATFM-CDM Notes

METCDM Notes:
[1] 2200-1359: A ridge to the north with a W to SW airstream. Light surface winds generally, mainly from the NE in the morning and late evening periods and SW during the afternoon. +/- 1-2 hours for the change to RWY 21/24, 04Z indicated here as a mid-point due to the position of the ridge and as winds will be light. A cloudy day with the chance of light showers, mainly late morning and afternoon and then near the coast in the evening. There appears to be a reasonable chance of cloud being between 2000-3000ft so IMCA has been proposed.

NCC DLM Notes:
[Nil DLM Notes]

SM Notes:
[Nil SMTM Notes]

GDP Notes

Nil significant operational risk/s identified.

Midday Update: BRIEF DETAIL YPPH: Isolated passing showers. Cloud 2500-4500ft. WNW to SW winds. Turbulence easing.
ATC ADVICE: 317 (201A/116D) movements remaining. GDP-A thru till 0500. Nil significant network issues identified at this time.

Tabulated Data

Time (Hour UTC)						030200	030300	030400	030500	030600	030700	030800	030900	031000	031100	031200	031300	
Runway Mode						03/06 IMCA	03/06 IMCA	21/24 IMCA	21/24 IMCA	21/24 IMCA	21/24 IMCA	21/24 IMCA	21/24 IMCA	21/24 IMCA	21/24 IMCA	21/24 IMCA	03/06 IMCA	
Rate-Arrs						24	24	26	26	26	26	26	26	26	26	26	24	
Rate-Deps																		
Segmentation and Notes																		
METCDM Notes		1	1	1	1	1	1	1	1	1	1	1	1	1	1	1	1	
Segmentation		1	1	1	1	1	1	2	2	2	2	2	2	2	2	2	2	

Bar Graph

